

**DEVELOP**

Dynamic balance

[www.develop.eu](http://www.develop.eu)



Want to make it  
**your**  
own device?

OFFICE PRODUCTS



## Choose DEVELOP

Every industry faces different challenges. Every business has different needs. Yours is no exception. At DEVELOP we are focused on meeting your specific document production and management demands – no matter whether you're a start-up, small business or mid-sized company. We do this by providing multifunctional office devices that can be customised to your specific requirements. Discover the benefits you enjoy with DEVELOP.

## Wouldn't it be great to enjoy optimal **ease of use**?

We offer you solutions that adapt to your daily working habits and save a lot of time in routine office tasks like printing, scanning or copying. You can customise the individual screen features, specific functions and workflows to be activated via your ineo device's display. Frequently used functions can be placed on your start screen while functions you don't use can simply be removed.

## Ever dreamed of using a personally **customised device**?

You can now make your ineo device a true part of your business. Start with your own company logo, display a Flash video when the display is idle, customise your user interface on the screen, and have your business-relevant apps accessed straight from the operating panel.

Useful apps, remote app updates, connectors to cloud solutions such as Google Drive or Google Mail, paper templates – just about everything you need to improve your business processes is available from DEVELOP's dstore.

[www.dstore.develop.eu](http://www.dstore.develop.eu)

## Want to enjoy more **mobility** at work?

More and more businesses are transforming their offices into mobile workplaces. Employees enjoy the flexibility of working where they want, yet still need to stay connected. DEVELOP makes printing from a mobile device even easier and more intuitive than from a PC. You don't even need to download external apps or install a specific printer driver – our mobile features integrate seamlessly with innovative mobile technologies to let you print from your tablet or smartphone with just one click. Our security functionality ensures your data are safe, and on most ineo devices, access to safety features like secure print, user authentication and account tracking comes with the free app ineoPRINT.

### ineoPRINT

The free ineoPRINT app connects iOS or Android devices to ineo systems, for intuitive printing and scanning.

With ineoPRINT, documents can be printed from, or scanned to the main cloud storage platforms, bringing the documents to your hand anytime you need them.

Download the free ineoPRINT app directly from the AppStore or Google Play Store.





## Wouldn't you like to optimise your **workflow integration**?

It's easier than you might think. Our devices can easily be integrated into any existing network and help to optimise document workflows – with integrated device functionalities or professional solutions working hand in hand with our systems, e.g. the DEVELOP apps convert+share and store+find. Besides, DEVELOP offers remote monitoring of your printer fleet and helps reduce inefficiency in fleet management. Why not let our know-how optimise your workflow processes!

## Still worrying about **data security**?

In today's business environment company data have to cross a lot of different data highways, and much of your corporate data runs through your multifunctional system(s). DEVELOP ensures your data stay safe and no document ends up in the wrong hands. Thanks to the Common Criteria/ISO 15408 IEEE 2600.1 certification, access control, data security and network encryption you can be sure your data stay where they belong – in the right hands!

[www.dstore.develop.eu](http://www.dstore.develop.eu)

## DEVELOP's software solutions replace time-consuming manual operations with automated processes:

### **convert+share**

Scan a document in various file formats, then send the file straight to whatever destination you want, e.g. Google Drive, Evernote or Microsoft SharePoint.

### **store+find**

Locate any document easily and quickly via a keyword or full-text search facility. Store documents in a very wide range of file formats. And simply add electronic documents to store+find, or import them direct from MS Office.

### **ineo connector apps**

Three custom-developed apps connect ineo office systems to the most popular cloud services Google Apps™, Evernote™ and Microsoft SharePoint™. These apps support the mobility and flexibility demanded in modern-day offices.



### **ineo Navigator**

Want a quick overview of the different functions of your ineo system(s)? Join the free online learning platform ineoNavigator and get to know your ineo device(s) fast. Printing, scanning, copying and faxing – the usage explanations are clearly structured and flexible.

#### **Benefits**

- > Free of charge
- > Access at any time and as long as needed
- > No dependency on hotlines
- > No external instructor required
- > No unproductive waiting time

[www.ineo-navigator.develop.eu](http://www.ineo-navigator.develop.eu)



Wouldn't **great design** liven up your office?

DEVELOP systems not only make an impression with their high quality and reliability, but also their cool design. There is bound to be high spirits in your office! Whether you choose one of the fashionable designs that are ready to make your office even more attractive, or if you create your own ineo decor that perfectly matches to your environment. Contact your DEVELOP partner and discover the ineo decors.

## Know the benefits **green efficiency** brings your business?

Our planet's survival depends on how we care for the environment today. As a company we are proud of our ISO 14001 environmental certification and production facilities that work to the zero-waste principle. But even more importantly for you, all our office devices are environment-friendly, e.g. with recyclable components and energy-saving features to reduce power consumption. ENERGY STAR and Blue Angel awards are proof of their environmental friendliness. And that means a better carbon footprint for your business and money saved through lower electricity bills.

## Keen to **cut costs**?

Ease of use, customisation, green efficiency, optimised document processes: what do all these benefits have in common? They save your staff time and effort, and your business money. To cut your document production and management costs all you have to do is invest in a DEVELOP device.



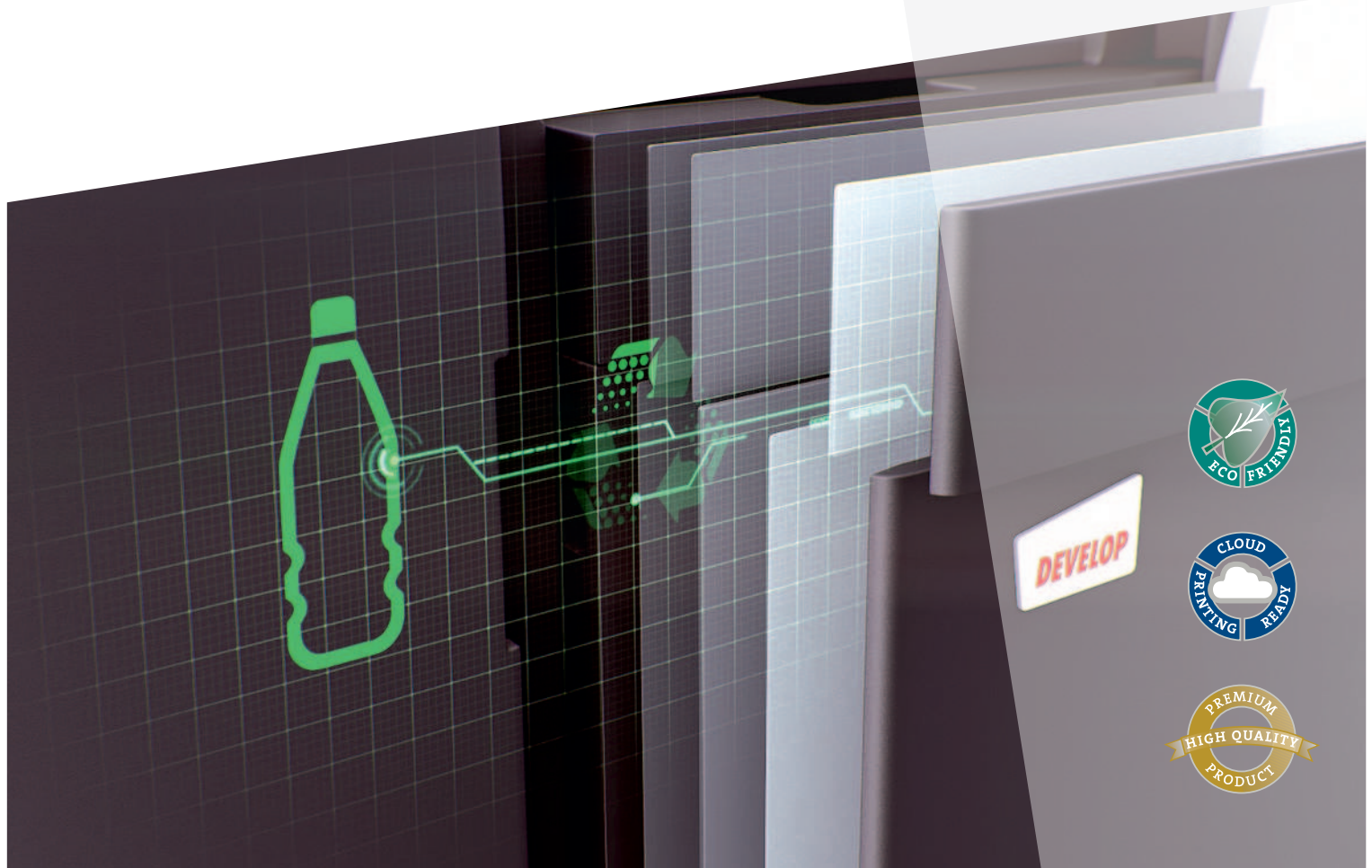
### > ENERGY STAR

As part of an energy-saving programme for office equipment, products that meet specific standards can be registered as ENERGY STAR devices. In particular, the devices power down when not in use to save electricity. All new DEVELOP devices are ENERGY STAR-qualified.



### > Blue Angel

Since 1978, the Blue Angel seal has been awarded to environment-friendly products. Blue Angel evaluates a product's energy consumption, noise emissions and recyclability. Since energy consumption is directly related to CO<sub>2</sub> emissions, a crucial greenhouse gas, Blue Angel devices are helping to reduce CO<sub>2</sub> emissions. DEVELOP has continued to receive certification for new products by clearing the certification bar each time it has been raised.



**DEVELOP**

Dynamic balance

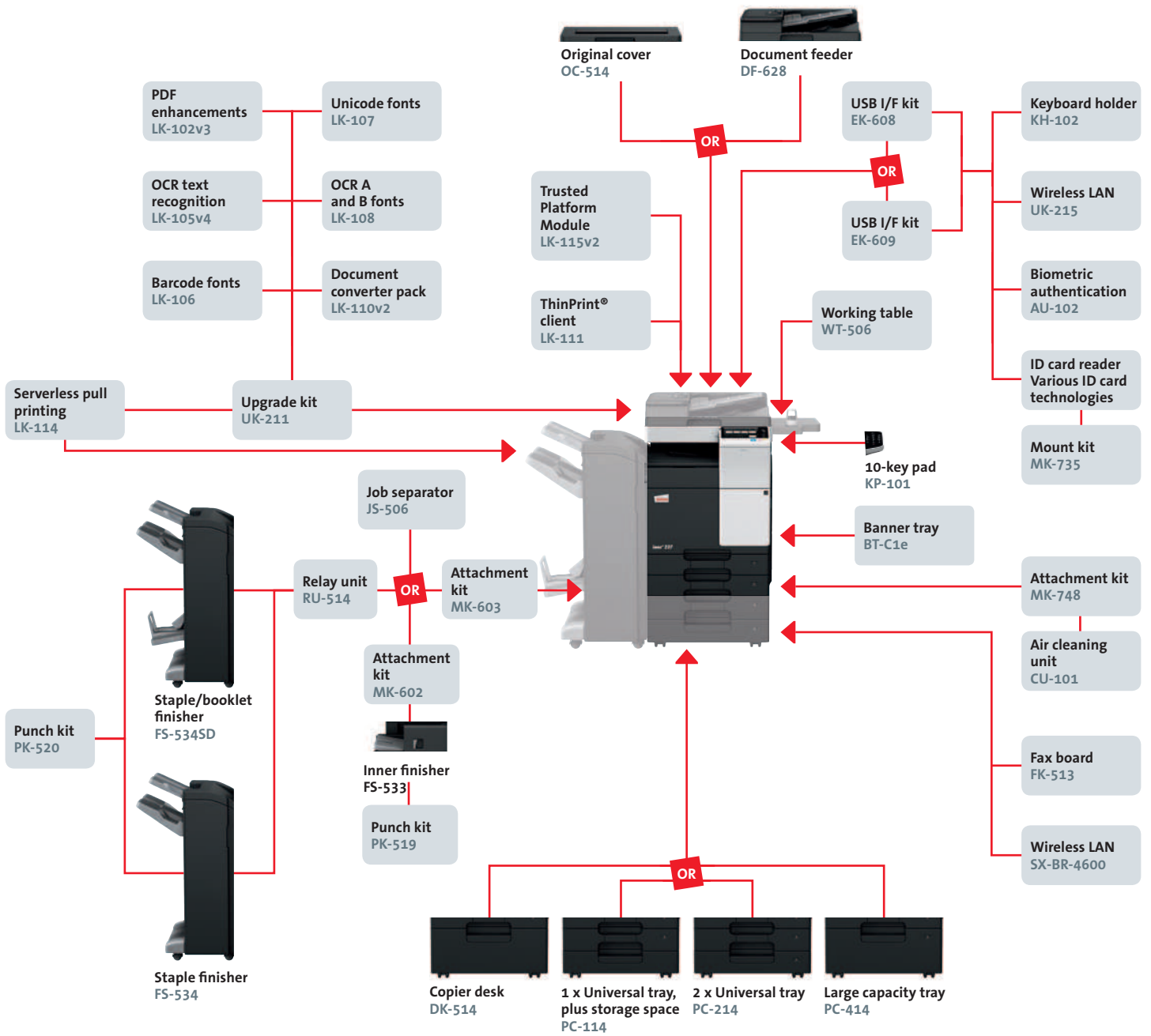
[www.develop.eu](http://www.develop.eu)



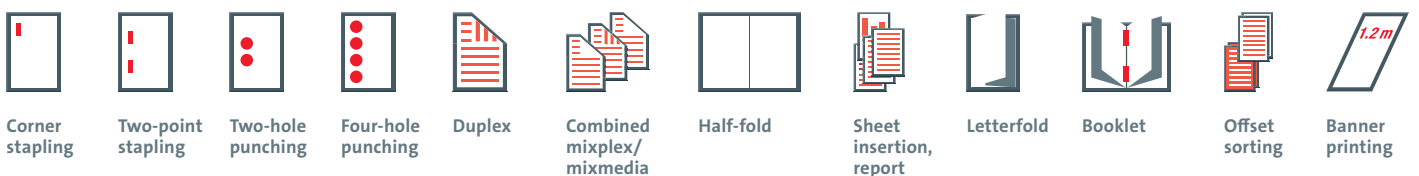
# ineo+ 227

- > Colour  
A3 multifunctional
- > Up to 22 ppm





Finishing functionalities



## Description

### ineo+ 227

A3 multifunctional with 22 ppm b/w and colour. Standard ineo print controller with PCL 6, PCL 5c, PostScript 3, PDF 1.4, XPS and OOXML support. Paper capacity of 500 + 500 sheets and 100-sheet manual bypass. Media from A6 to A3, 1.2 m banner and 60–256 g/m<sup>2</sup>. 2 GB memory, 250 GB hard disk and Gigabit Ethernet standard.

<b>DF-628 Document feeder</b>	Reversing automatic document feeder, capacity 100 originals
<b>OC-514 Original cover</b>	Cover instead of ADF
<b>PC-114 1 x Universal tray</b>	A5–A3, 500 sheets, 60–256 g/m <sup>2</sup>
<b>PC-214 2 x Universal tray</b>	A5–A3, 2 x 500 sheets, 60–256 g/m <sup>2</sup>
<b>PC-414 Large capacity tray</b>	A4, 2,500 sheets, 60–256 g/m <sup>2</sup>
<b>DK-514 Copier desk</b>	Provides storage space for print media and other materials
<b>MK-602 Attachment kit</b>	For FS-533 installation
<b>MK-603 Attachment kit</b>	For FS-533, FS-534/SD, JS-506 installation
<b>FS-533 Inner finisher</b>	50-sheet stapling, 500 sheets max. output
<b>PK-519 Punch kit for FS-533</b>	2/4 hole punching, autoswitching
<b>FS-534 Staple finisher</b>	50-sheet stapling, 3,200 sheets max. output
<b>FS-534SD Booklet finisher</b>	50-sheet staple finisher, 20-sheet booklet finisher, 2,200 sheets max. output
<b>RU-514 Relay unit for FS-534</b>	For FS-534 installation (Max. 100 sheets output capacity)
<b>PK-520 Punch kit for FS-534/SD</b>	2/4 hole punching, autoswitching
<b>JS-506 Job separator</b>	Separation for fax output etc.
<b>KP-101 10-key pad</b>	For use instead of touchscreen

<b>WT-506 Working table</b>	Authentication device placement
<b>FK-513 Fax board</b>	G3 fax, digital fax functionality
<b>KH-102 Keyboard holder</b>	To place USB keyboard
<b>EK-608 USB I/F kit</b>	USB keyboard connection
<b>EK-609 USB I/F kit</b>	USB keyboard connection, Bluetooth
<b>ID card reader</b>	Various ID card technologies
<b>MK-735 Mount kit</b>	Installation kit for ID card reader
<b>AU-102</b>	Finger vein scanner
<b>Biometric authentication</b>	
<b>LK-102v3</b>	PDF/A, PDF encryption, digital signature
<b>PDF enhancements</b>	
<b>LK-105v4</b>	Searchable PDF and PPTX , PDF/A (1a)
<b>OCR text recognition</b>	
<b>LK-106 Barcode fonts</b>	Supports native barcode printing
<b>LK-107 Unicode fonts</b>	Supports native Unicode printing
<b>LK-108 OCR A and B fonts</b>	Supports native OCR A and B font printing
<b>LK-110v2</b>	Generates various file formats incl. DOCX, XLSX and PDF/A
<b>Document converter pack</b>	
<b>LK-111 ThinPrint® Client</b>	Print data compression for reduced network impact
<b>LK-114 Serverless pull printing</b>	Secure and Follow Me printing solution requiring no server application. Host devices require 4GB memory.
<b>LK-115v2</b>	Trusted Platform Module for protection of data encryption and decryption
<b>TPM activation</b>	
<b>UK-211 Upgrade kit</b>	2 GB memory extension for upgrades
<b>UK-215 Wireless LAN</b>	Wireless LAN and wireless LAN Access Point Mode
<b>SX-BR-4600 Wireless LAN</b>	Wireless LAN to network connector
<b>MK-748 Attachment kit</b>	Installation kit for CU-101
<b>CU-101 Air cleaning unit</b>	Improves indoor air quality by reducing emissions
<b>BT-C1e Banner tray</b>	Multipage banner feeding

## Technical specifications

### SYSTEM SPECIFICATIONS

<b>Panel size/resolution</b>	7" / 800 x 480
<b>System memory</b>	2,048 MB (standard)
<b>System hard disk</b>	250 GB (standard)
<b>Interface</b>	10-Base-T/100-Base-T/1,000-Base-T Ethernet; USB 2.0; Wi-Fi 802.11b/g/n (optional)
<b>Network protocols</b>	TCP/IP (IPv4/IPv6), FTP, SMB; SMTP, WebDAV
<b>Frame types</b>	Ethernet 802.2; Ethernet 802.3; Ethernet II; Ethernet SNAP
<b>Automatic document feeder</b>	Up to 100 originals; A6–A3; 35–128 g/m <sup>2</sup> RADF optional available
<b>Printable paper size</b>	A5–A3; A6S; banner paper, max. 1,200 x 297 mm
<b>Printable paper weight</b>	60–256 g/m <sup>2</sup>
<b>Paper input capacity</b>	Standard: 1,100 sheets Max.: 3,600 sheets
<b>Tray 1</b>	500 sheets; A5–A4; 60–256 g/m <sup>2</sup>
<b>Tray 2</b>	500 sheets; A5–A3; 60–256 g/m <sup>2</sup>
<b>Tray 3 (optional)</b>	500 sheets; A5–A3; 60–256 g/m <sup>2</sup>
<b>Tray 4 (optional)</b>	2 x 500 sheets; A5–A3; 60–256 g/m <sup>2</sup>
<b>Large capacity tray (optional)</b>	2,500 sheets; A4; 60–256 g/m <sup>2</sup>
<b>Manual bypass</b>	100 sheets; A6–A3; custom sizes; banner; 60–256 g/m <sup>2</sup>
<b>Automatic duplexing</b>	A5–A3; 60–256 g/m <sup>2</sup>
<b>Finishing modes (optional)</b>	Offset; group; sort; staple; punch; half-fold; letter fold; booklet
<b>Output capacity (with finisher)</b>	Max.: 3,300 sheets
<b>Output capacity (without finisher)</b>	Max.: 250 sheets
<b>Stapling</b>	Max.: 50 sheets or 48 sheets + 2 cover sheets (up to 209 g/m <sup>2</sup> )
<b>Stapling output capacity</b>	Max.: 1,000 sheets
<b>Letter fold</b>	Up to 3 sheets
<b>Letter fold capacity</b>	Max.: 30 sheets (tray); unlimited
<b>Booklet</b>	Max.: 20 sheets or 19 sheets + 1 cover sheet (up to 209 g/m <sup>2</sup> )
<b>Booklet output capacity</b>	Max.: 100 sheets (tray); unlimited
<b>Copy/print volume (monthly)</b>	Rec.: 10,000 pages Max. <sup>(1)</sup> : 19,000 pages

<b>Toner lifetime</b>	Black: 24,000 pages; CMY: 21,000 pages
<b>Imaging unit lifetime</b>	Black: 80,000 pages/600,000 pages (Drum/Developer); CMY: 70,000 pages (Imaging unit)
<b>Power consumption</b>	220–240 V / 50/60 Hz; less than 1.6 kW (system)
<b>System dimensions (W x D x H)</b>	585 x 660 x 787 mm (standard configuration of main body)
<b>System weight</b>	Approx. 72 kg (without options/toner)

### COPIER SPECIFICATIONS

<b>Copying process</b>	Electrostatic laser copy; indirect
<b>Toner system</b>	HD polymerised toner
<b>Copy/print speed A4</b>	Up to 22 ppm
<b>Copy/print speed A3</b>	Up to 14 ppm
<b>Autoduplex speed A4</b>	Up to 22 ppm
<b>1st copy out time (mono/colour)</b>	6.8/8.4 sec.
<b>Warm-up time</b>	Approx. 20 sec. <sup>(2)</sup>
<b>Copy resolution</b>	600 x 600 dpi
<b>Gradation</b>	256 gradations
<b>Multicopy</b>	1–9,999
<b>Original format</b>	A5–A3
<b>Magnification</b>	25–400% in 0.1% steps; auto-zooming
<b>Copy functions</b>	Chapter; cover and page insertion; proof copy; adjustment test print; job setting memory; poster mode; image repeat; overlay (optional; with UK-211); stamping; copy protection

<sup>1</sup> If the maximum volume is reached within a period of one year, then a maintenance cycle must be performed.

<sup>2</sup> Warm up time may vary depending on the operating environment and usage

PRINTER SPECIFICATIONS

<b>Print resolution</b>	1,800 (equivalent) x 600 dpi
<b>Page description language</b>	PCL 6 (PCL 5c + XL 3.0); PostScript 3 (CPSI 3016); XPS
<b>Operating systems</b>	Windows 7 (32/64); Windows 8 (32/64); Windows 8.1 (32/64); Windows 10 (32/64); Windows Server 2008/2008 R2 (32/64); Windows Server 2012/2012 R2 (64); Windows Server 2016; Macintosh OS X 10.9 or later; Linux
<b>Printer fonts</b>	80 PCL Latin; 137 PostScript 3 Emulation Latin
<b>Print functions</b>	Direct print of PCL; PS; TIFF; XPS; PDF (v1.4); encrypted PDF files and OOXML (DOCX; XLSX; PPTX); mixmedia and mixplex; "Easy Set" job programming; overlay; watermark; carbon copy print, copy protection
<b>Mobile Printing</b>	AirPrint (iOS); Mopria (Android); Google Cloud Print (optional); WiFi Direct (optional); ineoPRINT (iOS/ Android); NFC Authentication and Pairing (Android)

SCANNER SPECIFICATIONS

<b>Scan speed (with optional document feeder) (mono/colour)</b>	Up to 45 ipm
<b>Scan resolution</b>	Max.: 600 x 600 dpi
<b>Scan modes</b>	Scan-to-E-mail (Scan-to-Me); Scan-to-SMB (Scan-to-Home); Scan-to-FTP; Scan-to-Box; Scan-to-USB; Scan-to-WebDAV; Scan-to-DPWS; Network TWAIN scan
<b>File formats</b>	TIFF; PDF; Compact PDF; JPEG; XPS; Compact XPS Optional: DOCX; XLSX; PDF/A; searchable PDF; linearised PDF
<b>Scan destinations</b>	2,100 (single + group); LDAP support
<b>Scan functions</b>	Annotation (text/time/date) for PDF; up to 400 job programs; Realtime scan preview

FAX SPECIFICATIONS

<b>Fax standard</b>	G3 (optional)
<b>Fax transmission</b>	Analogue; i-Fax; Colour i-Fax; IP-Fax
<b>Fax resolution</b>	Max.: 600 x 600 dpi (ultra-fine)
<b>Fax compression</b>	MH; MR; MMR; JBIG
<b>Fax modem</b>	Up to 33.6 Kbps
<b>Fax destinations</b>	2,100 (single + group)
<b>Fax functions</b>	Polling; time shift; PC-Fax; receipt to confidential box; Receipt to E-mail/FTP/SMB; up to 400 job programs

USER BOX SPECIFICATIONS

<b>Max. storable documents</b>	Up to 3,000 documents or 10,000 pages
<b>Type of user boxes</b>	Public; Personal (with password or authentication); Group (with authentication)
<b>Type of system boxes</b>	Secure print; Encrypted PDF print; Fax receipt; Fax polling
<b>User box functionality</b>	Reprint; Combination; Download; Sending (E-mail/FTP/SMB and fax); Copy box to box

SYSTEM FEATURES

<b>Security</b>	ISO15408 Common Criteria; IP filtering and port blocking; SSL2; SSL3 and TLS1.0 network communi- cation; IPsec support; IEEE 802.1x support; user authentication; Authentication log; secure print; Kerberos; Hard disk overwrite (8 standard types); Hard disk data encryption (AES 256); Memory data auto deletion; Confidential fax receipt; Print user data encryption; copy protection
<b>Accounting</b>	Up to 1,000 user accounts; Active Directory support (user name + password + E-mail + smb folder); User function access definition; Biometric authentication (finger vein scanner) optional; ID card authentication (ID card reader) optional
<b>Software</b>	store+find (opt.); convert+share (opt.); Personal Applications (opt.); Enterprise Suite (opt.); Data Administrator (user accounts & cost centres); Card solutions (opt.); Unix/Linux support; SAP support; EveryonePrint (opt.); PCounter (opt.); Web Connection



DEVELOP

Konica Minolta Business Solutions Europe GmbH  
Europaallee 17 30855 Langenhagen Germany Phone +49 511 7404-0 www.develop.eu

For more information regarding the ineo+ 227  
please refer to the respective product homepage



- All specifications refer to A4-size paper of 80 g/m<sup>2</sup> quality.
- The support and availability of the listed specifications and functionalities varies depending on operating systems, applications and network protocols as well as network and system configurations.
- The stated life expectancy of each consumable is based on specific operating conditions such as page coverage for a particular page size (5% coverage of A4). The actual life of each consumable will vary depending on use and other printing variables including page coverage, page size, media type, continuous or intermittent printing, ambient temperature and humidity.
- Specifications and accessories are based on the information available at the time of printing and are subject to change without notice.
- DEVELOP and ineo are registered trademarks/product titles owned by Konica Minolta Business Solutions Europe GmbH.
- Konica Minolta does not warrant that any specifications mentioned will be error-free.
- All brand and product names may be registered trademarks or trademarks of their respective holders and are hereby acknowledged.

**DEVELOP**